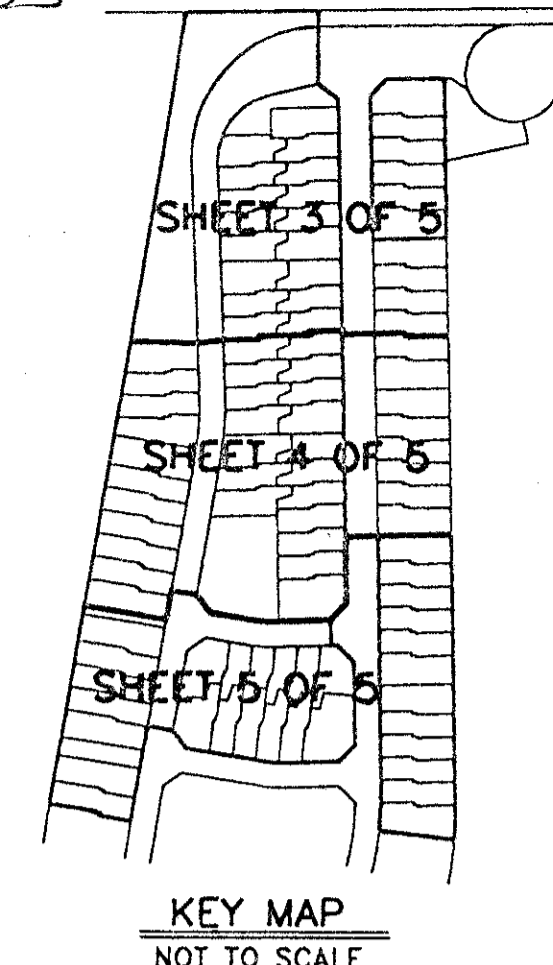
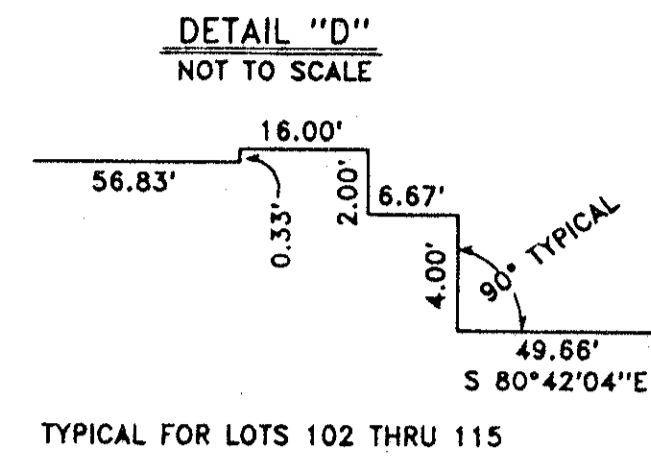


LAKE CHARLESTON TRACT "G" PLAT 2

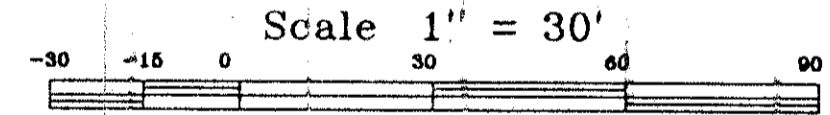
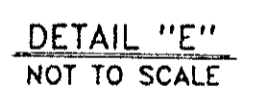
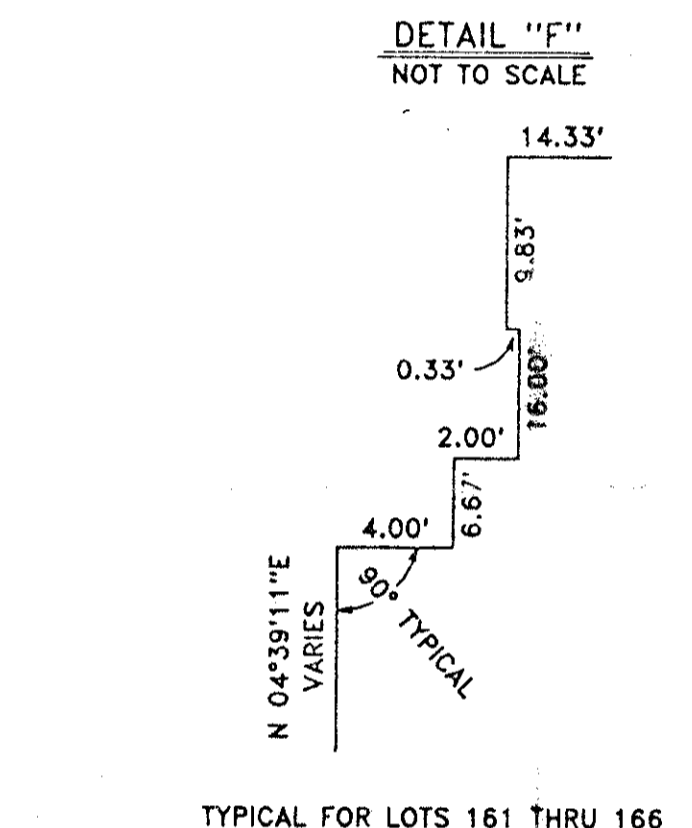
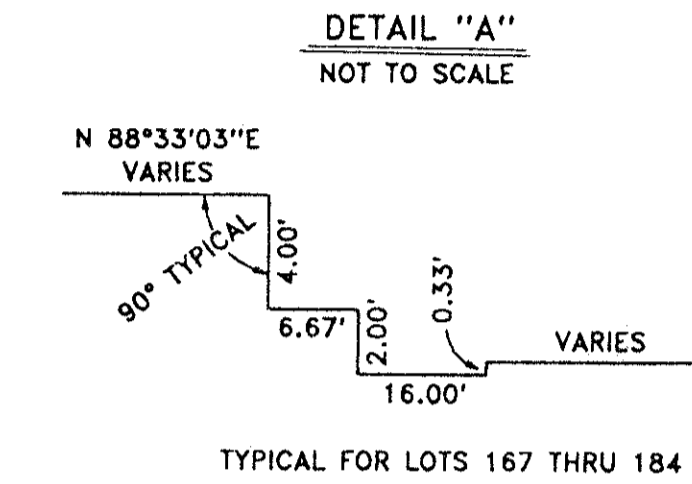
A PART OF LAKE CHARLESTON PLANNED UNIT DEVELOPMENT
 BEING A REPLAT OF A PORTION OF TRACT G OF LAKE CHARLESTON PLAT NO.3 AS RECORDED
 IN PLAT BOOK 62, PAGES 55 THRU 68, PUBLIC RECORDS OF PALM BEACH COUNTY, FLORIDA
 LYING IN SECTIONS 4,5,8 AND 9, TOWNSHIP 45 SOUTH, RANGE 42 EAST
 SHEET 5 OF 5
 MARCH, 1996

0533-033

106



STATE OF FLORIDA
 COUNTY OF PALM BEACH
 This Plat was filed for record at _____
 on M. This day of _____, 19____
 and duly recorded in Plat Book No. _____
 on Page _____
 Dorothy H. Wilken, Clerk of the Circuit Court
 By _____ D.C.



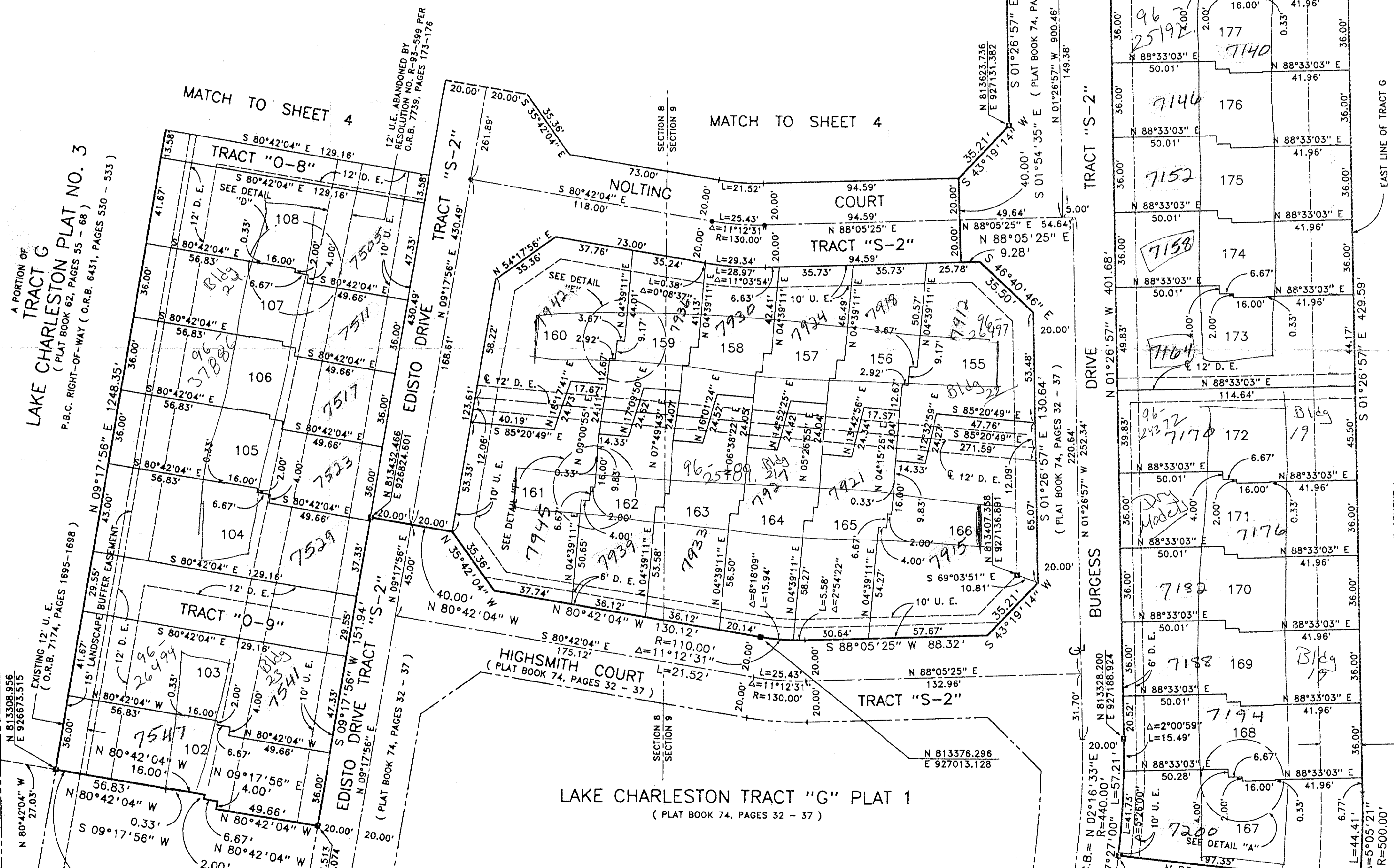
Pet 86-96
78/106

* THE FLOOD PLAIN EASEMENT IS SUBJECT TO FLOODING DURING THE THREE YEAR TWENTY-FOUR HOUR RAINFALL EVENT.

THIS INSTRUMENT WAS PREPARED BY LESLIE BISPOUT UNDER THE SUPERVISION OF CRAIG S. PUSEY, PROFESSIONAL LAND SURVEYOR AND MAPPER OF LANDMARK SURVEYING & MAPPING, INC.

Landmark Surveying & Mapping Inc.
 1850 FOREST HILL BOULEVARD
 PH. (407)433-5405 SUITE 100 W.P.B. FLORIDA

LAKE CHARLESTON TRACT "G" PLAT 2



COORDINATE NOTE:
 STATE PLANE COORDINATES SHOWN ARE GRID DATUM, NAD 83 1990 ADJUSTMENT, FLORIDA EAST ZONE, COORDINATE SYSTEM 1983 STATE PLANE TRAVERSE MERCATOR PROJECTION.
 LINEAR UNIT = US SURVEY FEET
 ALL DISTANCES ARE GROUND
 SCALE FACTOR = 1.0000252
 GROUND DISTANCE X SCALE FACTOR = GRID DISTANCE
 N 89°07'19" E (PLAT BEARING) -00°00'34" COUNTER CLOCKWISE BEARING ROTATION (PLAT TO GRID)
 N 89°06'45" E (GRID BEARING)

COMMON LINE BETWEEN PLAT AND THE SOUTH RIGHT-OF-WAY LINE OF HYPOLUX ROAD (O.R.B. 5897, PAGES 1776 - 1793)

0533-033

SUBDIVISION * LAKE CHARLESTON
 BOOK 78 PAGE 106
 FLOOD ZONE B FLOOD MAP # 170A
 QUAD # 49 ZONING RTS
 SE 96-96 ZIP CODE 33467
 PUR NAME LAKE CHARLESTON

Recorded 1/97

TAZ-438

LOT 87
 LAKE CHARLESTON TRACT "G" PLAT 1
 (PLAT BOOK 74, PAGES 32 - 37)

LOT 13
 LAKE CHARLESTON TRACT "G" PLAT 1
 (PLAT BOOK 74, PAGES 32 - 37)